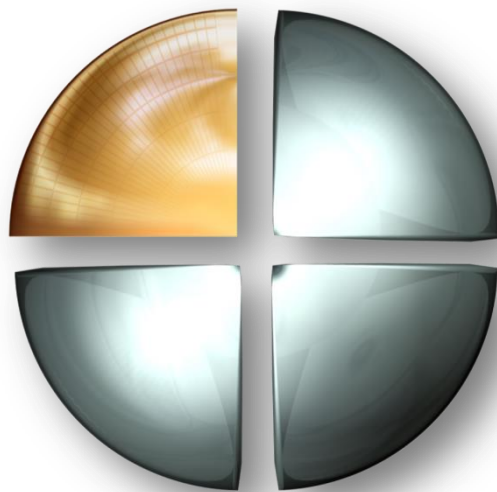


Efficiency THROUGH TRANSPARENCY

A NEXT GENERATION SOLUTION FOR DETAILED PRODUCTION MONITORING



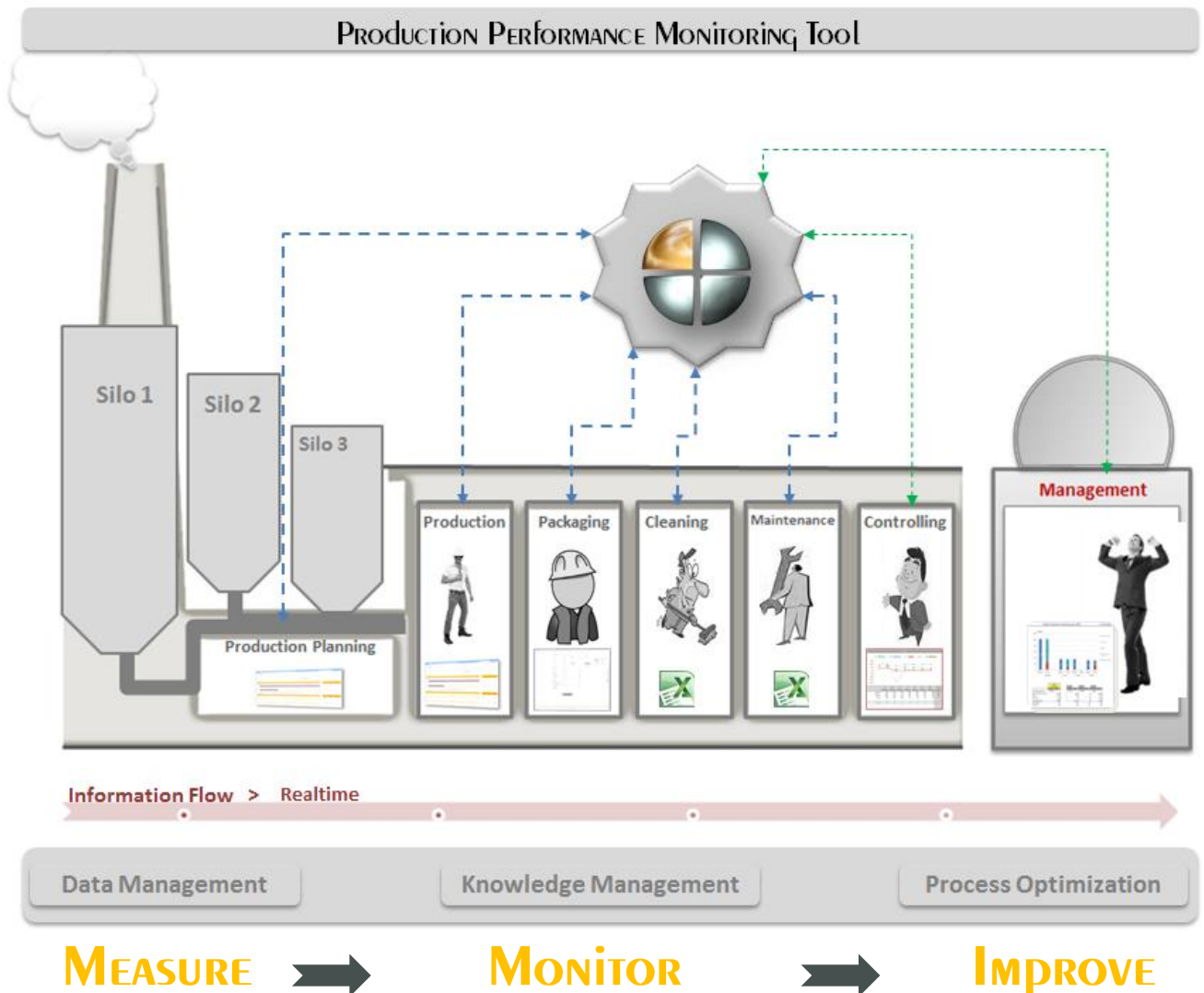
PPM Tool

WHAT is A PPM Tool ?

A TECHNICAL SOLUTION,

A PRODUCTION DATA CAPTURING SYSTEM,
A OEE SYSTEM

TO **VISUALISE** AND **OPTIMISE**
A PRODUCTION LINE DESIGNED FOR
THE FOOD MANUFACTURING & PROCESSING INDUSTRY.



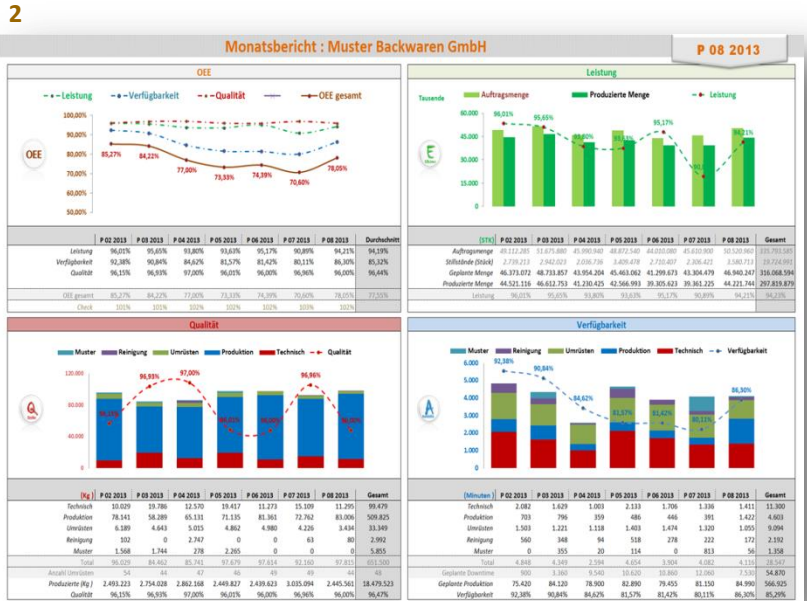
ADVANTAGES AND FEATURES



- A PURE **SOFTWARE SOLUTION**, IRRESPECTIVE OF THE **PRODUCTION FACILITY & EQUIPMENTS**.
- DETAILED **OEE VISUALIZATION** OF THE PRODUCTION FIGURES ON THE REPORTS AND THE DASHBOARD
- HELPS TO PLAN **PREVENTIVE MAINTANENCE** BASED ON THE SYSTEM DATA.
- PASSWORD PROTECTED USER PROFILES FOR THE **APPLICATION, MASTER DATA AND DATABASE**.
- CURRENTLY AVAILABLE IN **ENGLISH & GERMAN**, FURTHER 6 EUROPEAN LANGUAGES ARE PLANNED.
- IMPROVES **QUALITY OF THE DATA**, NO MORE HANDWRITTEN REPORTS.

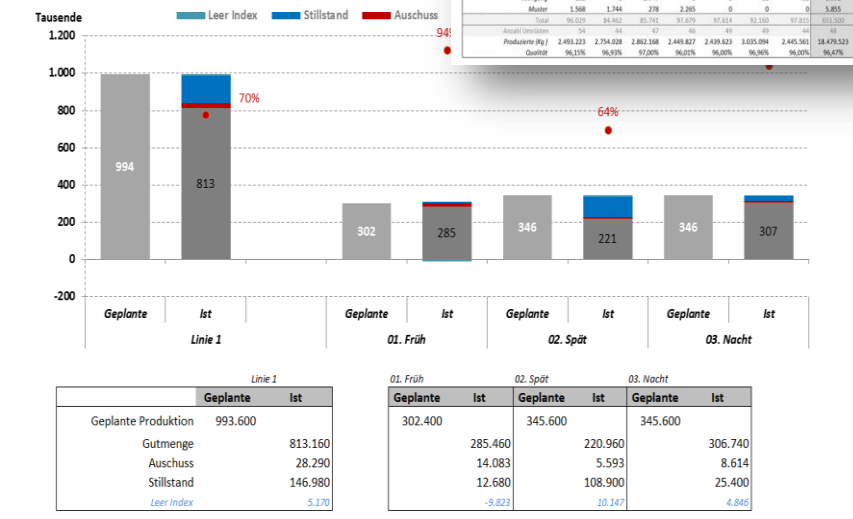


A PERFECT Collective Work



1

Produktion Übersicht pro Schicht



1

PRODUCTION OVERVIEW REPORT PER LINE SHOWS THE DAILY PRODUCTION DATA IN A OEE DIAGRAM WHICH HELPS THE PLANT MANAGER TO IDENTIFY THE LOSSES.

2

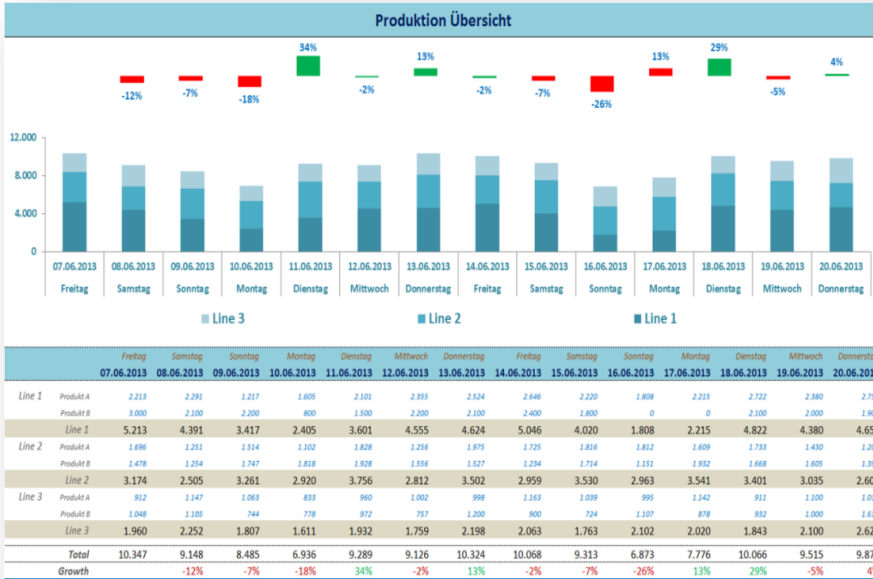
OEE DASHBOARD SHOWS THE 7 DAYS, 7 WEEKS AND 7 MONTHS TREND. IT HELPS YOU TO MONITOR THE DEVELOPMENTS ON THE EFFICIENCY, AVAILABILITY AND THE WASTE RATIO.



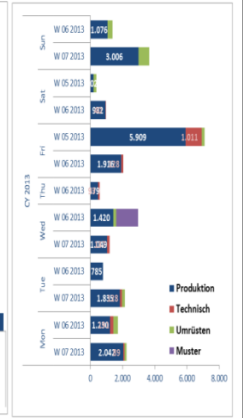
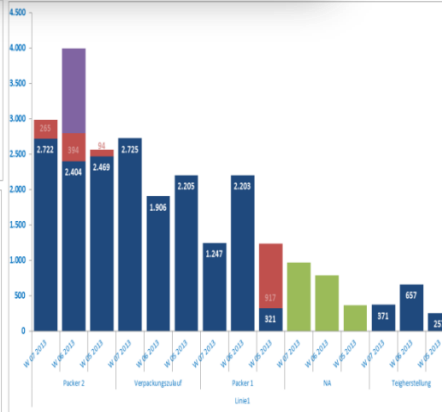
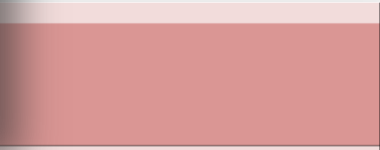
FROM

PEOPLE AND TECHNOLOGY

3



4



3

PRODUCTION REPORT SHOWS THE TREND AND THE GROWTH OF THE PRODUCED QUANTITY AND THE PRODUCT MIX.

4

PARETO CHART HELPS TO IDENTIFY THE MAJOR LOSSES, WASTE REASONS AND THE POTENTIAL SAVINGS.



SMALL

PROCESS CHANGE

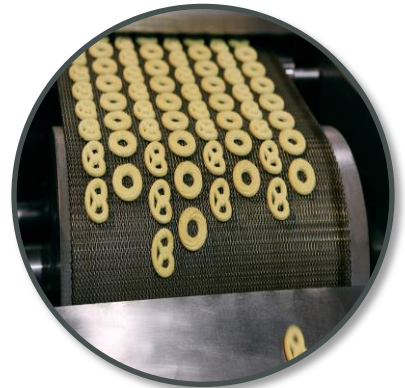


Big OUTCOMES

1 **Production Plan Display** shows Production Orders of the current day and the next day in order to improve communication and to recognise errors if any.



2 **Daily Report** shows consolidated production data of whole manufacturing facility including all production lines with respective manufacturing KPIs



3 **Shift Report** shows detailed production data of a particular shift with all KPIs. It helps to identify the root cause of the major losses at shift level.



4 **Line Performance Display** shows the runtime status of the actual production per line. All relevant downtimes (technical, cleaning, changeover, planned maintenance) will be shown which helps to improve the communication and the reaction time.



OUR COMMITMENTS



1. CONSULTATION

CUSTOMISED AND AS PER YOUR
REQUIREMENTS

2. SERVICE

TECHNICAL SUPPORT AS AND
WHEN REQUIRED

3. PRICE

TRANSPARENT PRICING
WITH SPECIAL OFFERS

